

UNIT #1

UNIT #2

PROJECT PROFESSIONAL OF RECORD

DRAWN BY	DRAWING DATE
CHECKED BY	REVISIONS
RG	4/02/25
RG	4/11/25
RG-CONTRACT	4/23/25

CONTRACT DRAWING SET
NOT FOR CONSTRUCTION

EXTRA MILE V2

FRONT ELEVATION

SITE LOCATION: STONE, VT
WIND SPEED 181Y/ASD; W/A
EXPOSURE CATEGORY: B
SNOW LOAD (GROUND/ASD): 10PSF/40PSF

SCALE
3/16" = 1'-0"

PROJECT: # 10712
SHEET SIZE: 11x17
DRAWING NO: EL-1

HUNTINGTON
HOMES, INC.

344 FASSETT RD, EAST MONTPELIER, VERMONT 05551
OFFICE (802) 478-3825 FAX (802) 478-0575

USE OF THESE PLANS WITHOUT WRITTEN PERMISSION FROM HUNTINGTON HOMES INC IS STRICTLY PROHIBITED

S:\DATA\CAD\DWG 2025\2025 CAD DWG\EXTRA MILE V2.AEC



UNIT #2

PROJECT PROFESSIONAL OF RECORD

DRAWN BY	DRAWING DATE
CHECKED BY	REVISIONS
RG	4/02/25
RG	4/1/25
RG-CONTRACT	4/21/25

CONTRACT DRAWING SET
NOT FOR CONSTRUCTION

EXTRA MILE V2

RIGHT SIDE ELEVATION

SITE LOCATION: STONE, VT
WIND SPEED (M.T./ASD): N/A
EXPOSURE CATEGORY: B
SNOW LOAD (GROUND/ASD): 10PSF/4PSF

SCALE
3/16" = 1'-0"

PROJECT: # 10712
SHEET SIZE: 11x17
DRAWING NO: EL-2

HUNTINGTON
HOMES, INC.
344 FASSETT RD, EAST MONTPELIER, VERMONT 05651
OFFICE (802) 478-3625 FAX (802) 478-0375

USE OF THESE PLANS WITHOUT WRITTEN PERMISSION FROM HUNTINGTON HOMES INC IS STRICTLY PROHIBITED



UNIT #1

PROJECT PROFESSIONAL OF RECORD

DRAWN BY	DRAWING DATE
RG	4/01/25
RG	4/1/25
RG-CONTRACT	4/29/25

CONTRACT DRAWING SET
NOT FOR CONSTRUCTION

EXTRA MILE V2

LEFT SIDE ELEVATION

SITE LOCATION: STONE VT
WIND SPEED (SLT/ASD): 1/1A
EXPOSURE CATEGORY: B
SNOW LOAD (GROUND/ASD): 10PSF/41PSF

SCALE
3/16" = 1'-0"

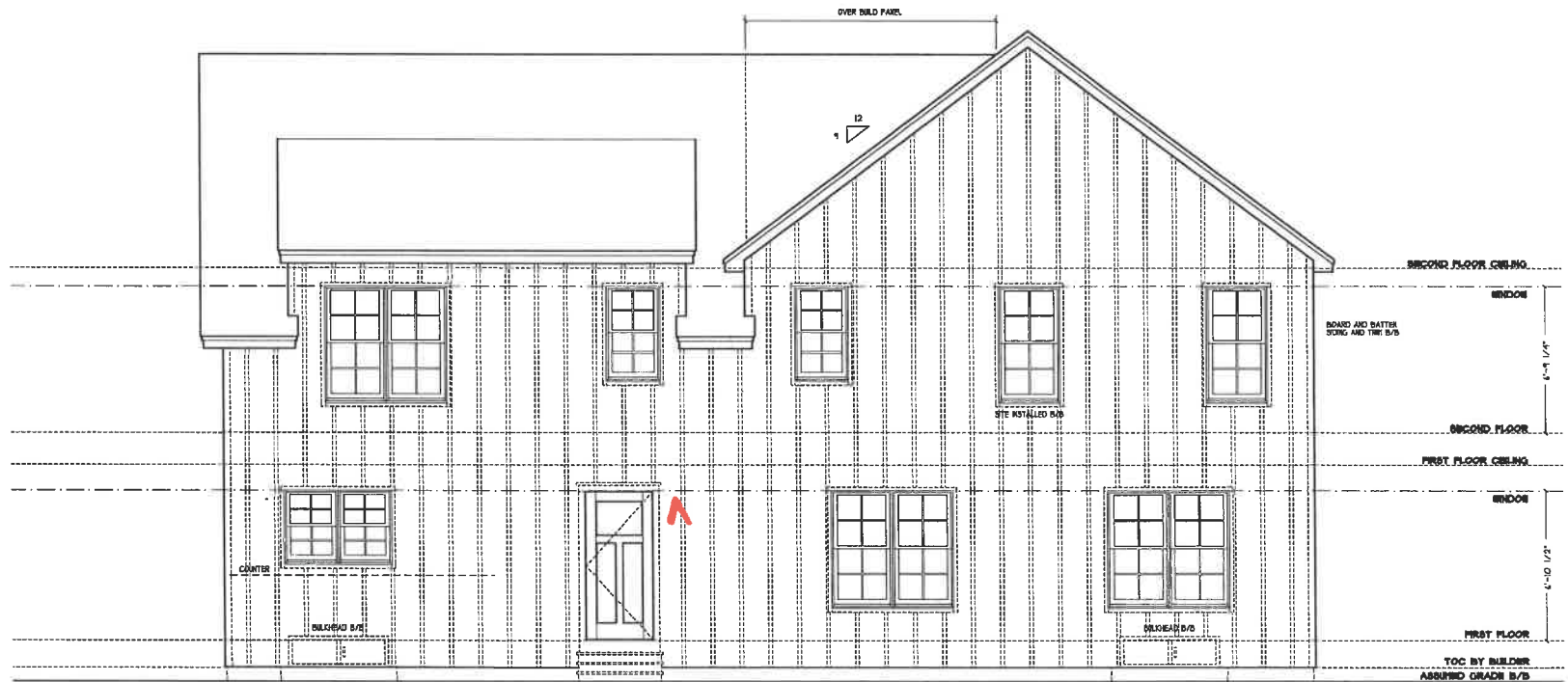
PROJECT: # 10712
SHEET SIZE: 11x17
DRAWING NO: EL-3

HUNTINGTON
HOMES, INC.

344 FASSETT RD, EAST MONTPELIER, VERMONT 05651
OFFICE (802) 478-3625 FAX (802) 478-0575

USE OF THESE PLANS WITHOUT WRITTEN PERMISSION FROM HUNTINGTON HOMES INC IS STRICTLY PROHIBITED

S:\DATA\CAD\DWG 2025\2025 CAD DWG\EXTRA MILE V2.AEC



UNIT #2

UNIT #1

PROJECT PROFESSIONAL OF RECORD

DRAWN BY CHECKED BY	DRAWING DATE REVISIONS
RG	1/01/25
RG	4/11/25
RG-CONTRACT	4/29/25

CONTRACT DRAWING SET
NOT FOR CONSTRUCTION

EXTRA MILE V2

REAR ELEVATION

SITE LOCATION: STONE, VT
WIND SPEED (CLY/ASD): N/A
EXPOSURE CATEGORY: B
SNOW LOAD (GROUND/ASD): 10PSF/4PSF

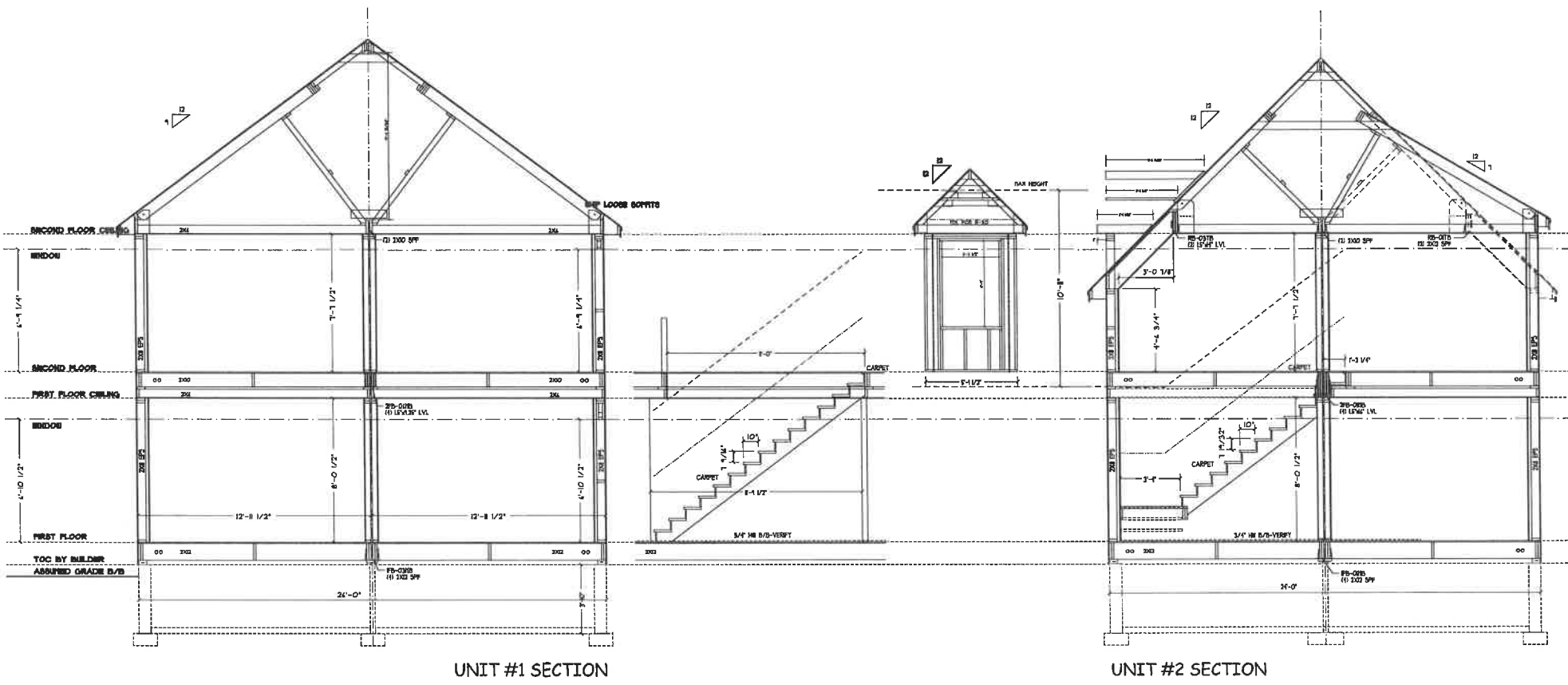
SCALE
3/16" = 1'-0"

HUNTINGTON
HOMES, INC.
344 FASSETT RD, EAST MONTPELIER, VERMONT 05551
OFFICE (802) 478-3625 FAX (802) 478-0575

PROJECT: # 10712
SHEET SIZE: 11x17
DRAWING NO: EL-4

USE OF THESE PLANS WITHOUT WRITTEN PERMISSION FROM HUNTINGTON HOMES INC IS STRICTLY PROHIBITED

S:\DATA\CAD\DWG 2025\2025 CAD DWGS\EXTRA MILE V2.AEC



UNIT #1 SECTION

UNIT #2 SECTION

PROJECT PROFESSIONAL OF RECORD

DRAWN BY	DRAWING DATE
CHECKED BY	REVISIONS
RG	4/01/25
RG	4/1/25
RG-CONTRACT	4/29/25

CONTRACT DRAWING SET
NOT FOR CONSTRUCTION

EXTRA MILE V2

BUILDING SECTIONS

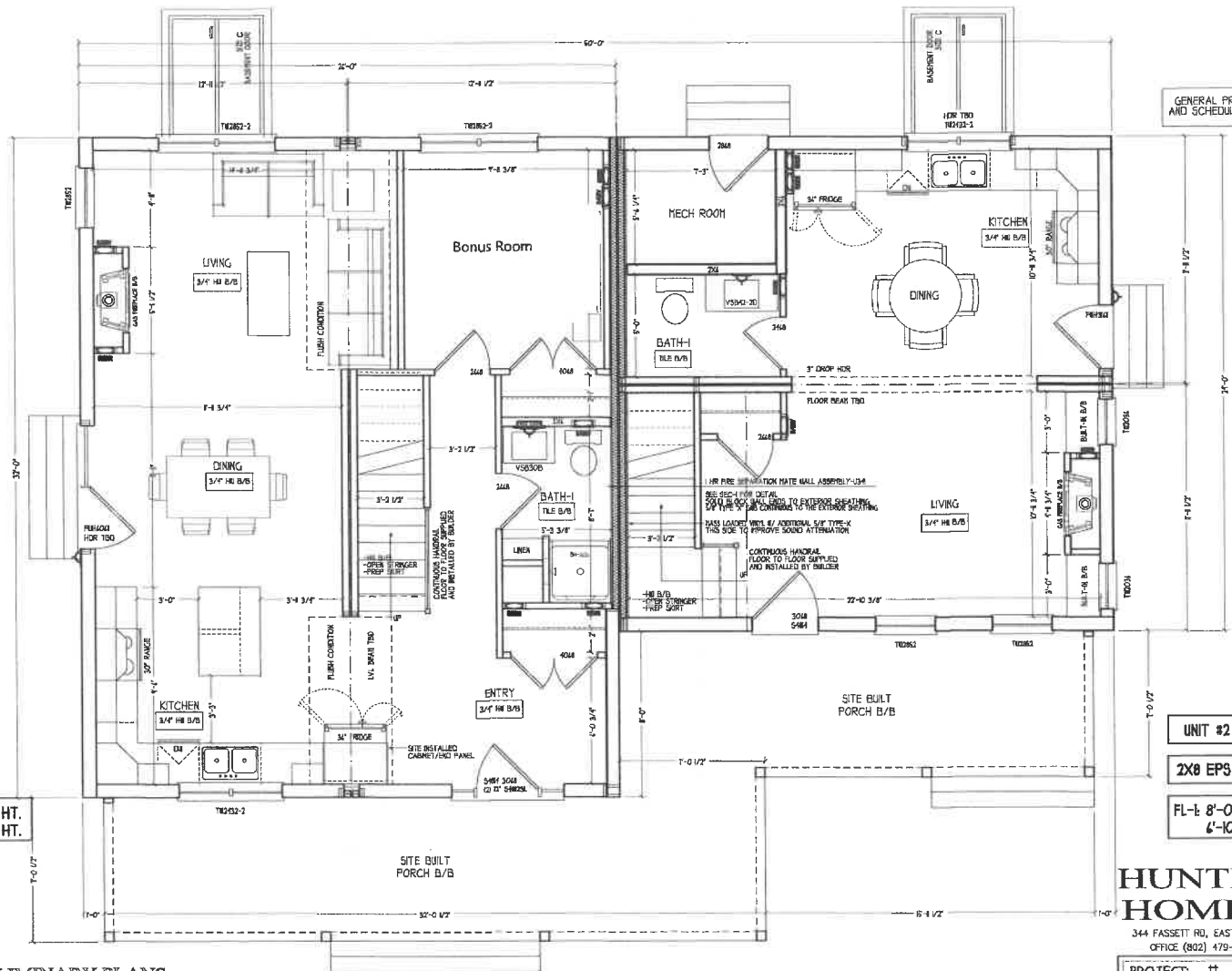
SITE LOCATION: STONE, VT
WIND SPEED (ULT/ASD): 110
EXPOSURE CATEGORY: B
SNOW LOAD (GROUND/ASD): 10PSF/40PSF

SCALE
3/16" = 1'-0"

HUNTINGTON HOMES, INC.
344 FASSETT RD, EAST MONTPELIER, VERMONT 05651
OFFICE (802) 478-3625 FAX (802) 478-0575

PROJECT: # 10712
SHEET SIZE: 11x17
DRAWING NO: SEC-1

USE OF THESE PLANS WITHOUT WRITTEN PERMISSION FROM HUNTINGTON HOMES INC IS STRICTLY PROHIBITED



GENERAL PROJECT NOTES AND SCHEDULES ARE ON G-1

UNIT #1
 2X8 EPS WALLS
 FL-E: 8'-0 1/2" CEILING HT.
 6'-10 1/2" WINDOW HT.

UNIT #2
 2X8 EPS WALLS
 FL-E: 8'-0 1/2" CEILING HT.
 6'-10 1/2" WINDOW HT.

PRELIMINARY PLANS
 NOT FOR CONSTRUCTION

EXTRA MILE V2

FIRST FLOOR PLAN

SITE LOCATION, STONE, VT
 WIND SPEED (ULT/ASD): N/A
 EXPOSURE CATEGORY: S
 SNOW LOAD (GROUND/ASD): 10PSF/4PSF

SCALE
 3/16" = 1'-0"

PROJECT: # 10712
 SHEET SIZE: 11x17
 DRAWING NO: A-1

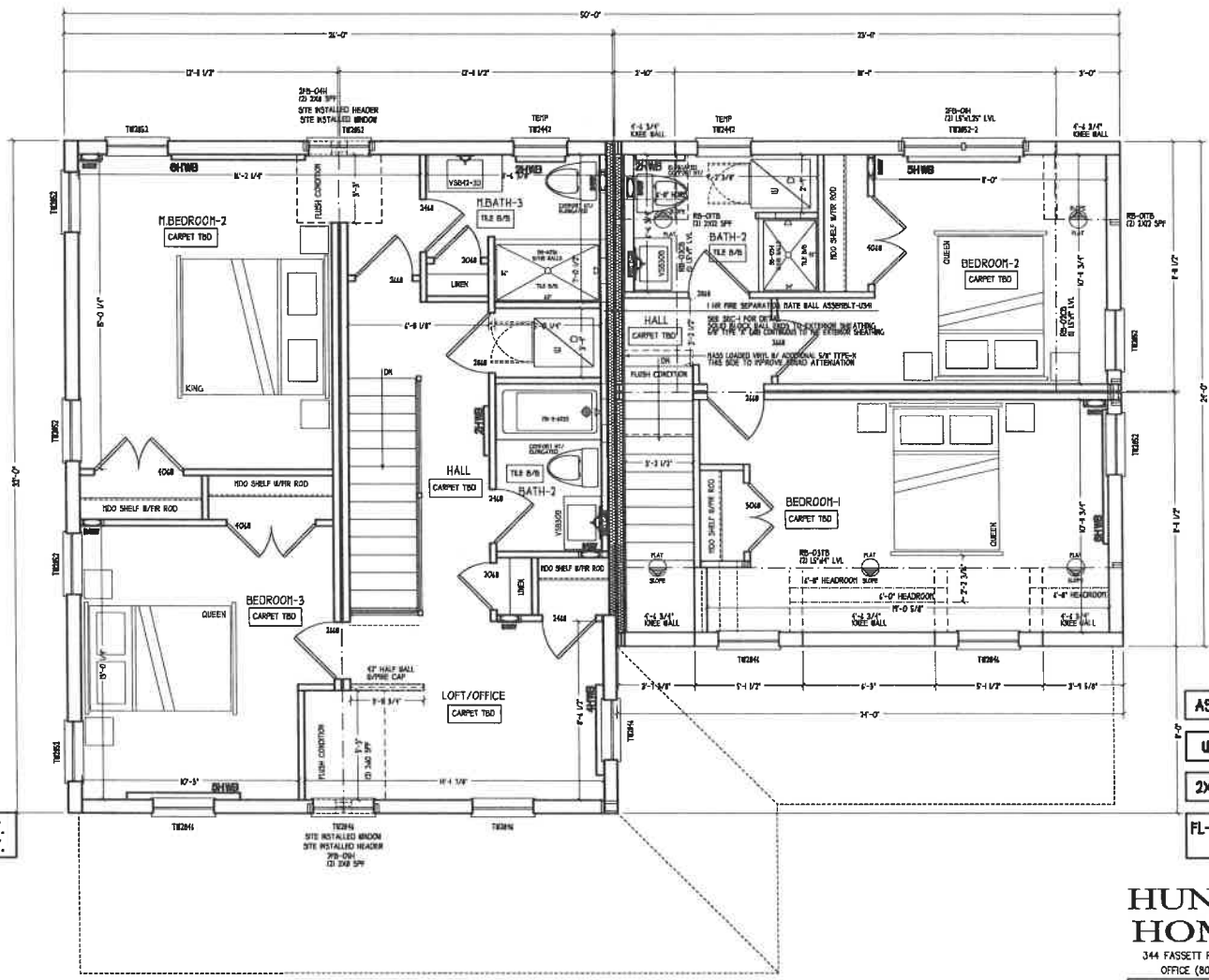
DESIGNED BY	DRAWING DATE
RG	4/02/25
RG	4/11/25

PROJECT PROFESSIONAL OF RECORD

USE OF THESE PLANS WITHOUT WRITTEN PERMISSION FROM HUNTINGTON HOMES INC IS STRICTLY PROHIBITED

S:\DATA\CAD\DWG 2025\2025 CAD DWGS\EXTRA MILE V2.AEC

HUNTINGTON HOMES, INC.
 344 FASSETT RD, EAST MONTPELIER, VERMONT 05651
 OFFICE (802) 479-3825 FAX (802) 479-0575



ASHP TBD B/B
 UNIT #1
 2X8 EPS WALLS
 FL-2: 1'-1 1/2" CEILING HT.
 6'-10 1/2" WINDOW HT.

ASHP TBD B/B
 UNIT #2
 2X8 EPS WALLS
 FL-2: 1'-1 1/2" CEILING HT.
 6'-10 1/2" WINDOW HT.

DRAWN BY	DRAWING DATE
CHECKED BY	REVISIONS
RG	4/02/25
RG	4/11/25
RG-CONTRACT	4/29/25

CONTRACT DRAWING SET
 NOT FOR CONSTRUCTION

EXTRA MILE V2

SECOND FLOOR PLAN

SITE LOCATION: STONE V1
 WIND SPEED: 1517/ASD: N/A
 EXPOSURE CATEGORY: B
 SNOW LOAD (GROUND/ASD): 10PSF/41PSF

SCALE
 3/16" = 1'-0"

PROJECT: # 10712
 SHEET SIZE: 11x17
 DRAWING NO: A-2

PROJECT PROFESSIONAL OF RECORD

USE OF THESE PLANS WITHOUT WRITTEN PERMISSION FROM HUNTINGTON HOMES INC IS STRICTLY PROHIBITED

S:\DATA\CAD\DWG 2025\2025 CAD DWGS\EXTRA MILE V2.AEC

HUNTINGTON
 HOMES, INC.
 344 FASSETT RD, EAST MONTPELIER, VERMONT 05651
 OFFICE (802) 478-3625 FAX (802) 478-0575

400 SERIES TILT-WASH DOUBLE-HUNG FULL-FRAME WINDOWS

Table of Tilt-Wash Double-Hung Window Sizes

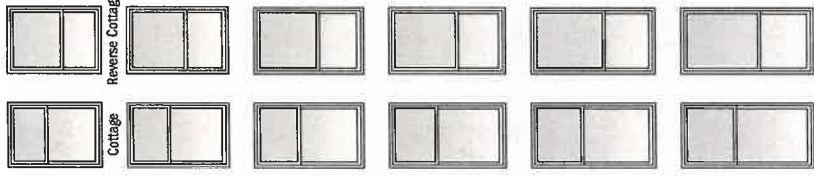
Scale 1/8" (3) = 1'-0" (305) — 1:96

Window Dimension	1'-9 5/8"	2'-1 5/8"	2'-5 5/8"	2'-7 5/8"	2'-9 5/8"	2'-11 5/8"	3'-1 5/8"	3'-5 5/8"	3'-9 5/8"
Minimum Rough Opening	(549)	(651)	(752)	(803)	(854)	(905)	(956)	(1057)	(1159)
Unobstructed Glass (lower sash only)	15"	19"	23"	25"	27"	29"	31"	35"	39"
	(381)	(483)	(584)	(635)	(686)	(737)	(787)	(889)	(991)
	(562)	(664)	(765)	(816)	(867)	(917)	(968)	(1070)	(1172)
	1'-10 7/8"	2'-2 1/8"	2'-6 1/8"	2'-8 1/8"	2'-10 1/8"	3'-0 1/8"	3'-2 1/8"	3'-6 1/8"	3'-10 1/8"

Window Dimension	CUSTOM WIDTHS — 21 1/8" to 45 5/8"										CUSTOM HEIGHTS — 38 7/8" to 92 7/8"										
3'-0 7/8"	TW18210	TW20210	TW24210	TW26210	TW28210	TW210210	TW30210	TW34210	TW38210	TW42210	TW18310	TW20310	TW24310	TW26310	TW28310	TW30310	TW34310	TW38310	TW42310	TW46310	
3'-4 7/8"	TW1832	TW2032	TW2432	TW2632	TW2832	TW21032	TW3032	TW3432	TW3832	TW4232	TW1836	TW2036	TW2436	TW2636	TW2836	TW3036	TW3436	TW3836	TW4236	TW4636	
3'-8 7/8"																					
4'-0 7/8"																					
4'-4 7/8"																					
4'-8 7/8"																					
5'-0 7/8"																					
5'-4 7/8"																					
5'-8 7/8"																					
6'-0 7/8"																					
6'-4 7/8"																					

Custom-size windows are available in 1/8" (3) increments.

Cottage or reverse cottage sash ratio available for heights shown below in all widths.
CUSTOM WIDTHS — 21 1/8" to 45 5/8"
CUSTOM HEIGHTS — 48 7/8" to 76 7/8"



Size tables for windows with cottage or reverse cottage sash are available at andersenwindows.com/sizing.

- *"Window Dimension" always refers to outside frame-to-frame dimension.
- **"Minimum Rough Opening" dimensions may need to be increased to allow for use of building wraps, flashing, sill panning, brackets, fasteners or other items.
- Dimensions in parentheses are in millimeters.
- Meet or exceed clear opening area of 5.7 sq. ft. or 0.53 m², clear opening width of 20" (508) and clear opening height of 24" (610).

continued on next page

400 SERIES TILT-WASH DOUBLE-HUNG FULL-FRAME WINDOWS



Table of Tilt-Wash Double-Hung Window Sizes (continued)

Scale 1/8" (3) = 1'-0" (305) – 1:96

Window Dimension	1'-9 5/8"	2'-1 5/8"	2'-5 5/8"	2'-7 5/8"	2'-9 5/8"	2'-11 5/8"	3'-1 5/8"	3'-5 5/8"	3'-9 5/8"
	(549)	(651)	(752)	(803)	(854)	(905)	(956)	(1057)	(1159)
Minimum Rough Opening	1'-10 1/8"	2'-2 1/8"	2'-6 1/8"	2'-8 1/8"	2'-10 1/8"	3'-0 1/8"	3'-2 1/8"	3'-6 1/8"	3'-10 1/8"
	(562)	(664)	(765)	(816)	(867)	(917)	(968)	(1070)	(1172)
Unobstructed Glass (lower sash only)	15"	19"	23"	25"	27"	29"	31"	35"	39"
	(381)	(483)	(584)	(635)	(686)	(737)	(787)	(889)	(991)



CUSTOM WIDTHS – 21 5/8" to 45 5/8"

Window Dimension	1'-9 5/8"	2'-1 5/8"	2'-5 5/8"	2'-7 5/8"	2'-9 5/8"	2'-11 5/8"	3'-1 5/8"	3'-5 5/8"	3'-9 5/8"
7'-4 7/8" (2257) 7'-4 7/8" (2257) 39 15/16" (1014)									
7'-8 7/8" (2359) 7'-8 7/8" (2359) 41 15/16" (1065)									

Custom-size windows are available in 1/8" (3) increments.

Windows 7'-4 7/8" (2257) and 7'-8 7/8" (2359) high have interior and exterior brackets. Interior brackets, located on both sides of the meeting rail, must be flipped up for proper product performance. Andersen* reinforced joining materials must be used when vertically joining 7'-4 7/8" (2257) and 7'-8 7/8" (2359) height windows.

* "Window Dimension" always refers to outside frame-to-frame dimension.
 * "Minimum Rough Opening" dimensions may need to be increased to allow for use of building wraps, flashing, sill panning, brackets, fasteners or other items.
 * Dimensions in parentheses are in millimeters.
 ◊ Meet or exceed clear opening area of 5.7 sq. ft. or 0.53 m², clear opening width of 20" (508) and clear opening height of 24" (610).

400 SERIES TILT-WASH DOUBLE-HUNG FULL-FRAME WINDOWS



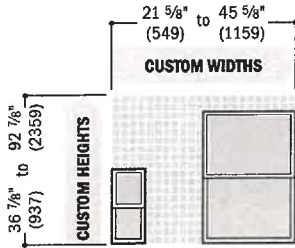
Custom Sizes and Specification Formulas



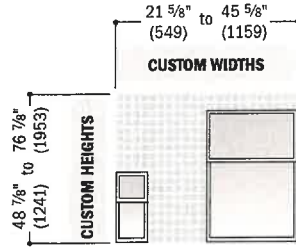
Available in 1/8" (3) increments between minimum and maximum widths and heights. Some restrictions apply; contact your Andersen supplier. For minimum rough opening dimensions for joined windows, see specific joining instruction guides. Measurement guide for custom-size windows can be found at andersenwindows.com/measure.

Tilt-Wash Double-Hung Windows

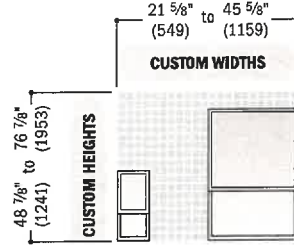
Equal



Cottage



Reverse Cottage



Clear Opening 	Width = window width - 1.852" (47) x 2 <i>Contact your Andersen supplier for clear opening height.</i>	Minimum R.O. 	Width = window width + 1/2" (51) Height = window height + 0"
Vent Opening 	<i>Vent opening formulas are dependent on window size; contact your Andersen supplier.</i>	Unobst. Glass 	Width = window width - 3.376" (86) Height: Upper Sash = upper sash height - 3.035" (77) Lower Sash = lower sash height - 3.831" (97)

* Dimensions in parentheses are in millimeters.
 • **Clear Opening** formulas provide dimensions for determining area available for egress. **Vent Opening** formulas provide dimensions for determining area available for passage of air. **Minimum R.O.** (minimum rough opening) formulas provide minimum rough opening width and height dimensions. **Unobst. Glass** (unobstructed glass) formulas provide dimensions for determining area available for passage of light.

... / Lighting / Outdoor Lighting / Outdoor Wall Lighting / Outdoor Sconces

Internet # 321420910 Model # CA2239-2W

1-Light Matte Black Motion Sensing Dusk to Dawn Non-Solar Outdoor Wall Lantern Sconce with Clear Tempered Glass (2-Pack)

★★★★★ (90) Questions & Answers (54)

Feedback



Hover Image to Zoom

Share Print

Pay \$49.12 after \$25 OFF your total qualifying purchase upon opening a new card. Apply for a Home Depot Consumer Card

- Motion sensor dusk to dawn outdoor wall light
- Upgrade A+ mode is more convenient and energy-saving
- Weather-resistant build allows for wet locations
- [View More Details](#)

Pickup at Williston

Delivering to 05495



Ask about this product

Get an immediate answer with AI

Get an Answer

AI-generated from the text of manufacturer documentation. To verify or get additional information, please contact The Home Depot customer service.

Product Details



About This Product

Add a touch of modern-inspired flair to the exterior of your home with this clean-lined outdoor wall lantern. With its classic black finish and clear tempered glass panes, the minimalistic design of this wall sconce complements any decor making it the ideal piece for all your outdoor lighting needs. Constructed with advanced PIR motion technology and IC lighting sensor. You get convenience, security and efficiency with these outdoor light fixtures. Enjoy the comfort and convenience of continuous bright illumination during the early evening hours.

Feedback

Highlights

- Dusk to dawn: in auto mode, the light will turn on lower-level 30% brightness at dawn and stay on for approximately 8-hours until it detects light in the morning, the light will turn off automatically
- Motion sensor: in auto mode, the light will turn to full 100% brightness when motion is detected and stay on as long as the motion is continuing, it detects motion up to 40 ft. away across a range of 220°
- Night light on: in manual override mode, the light will turn on and stay on for approximately 8-hours as a night light fixture, until the dusk-to-dawn sensor detects light in the morning
- Night light off: if you don't want low brightness, turn off and turn on the wall switch twice within 2-seconds when the fixture is running in auto mode, the light will turn off all night unless it detects a movement
- Weather resistant: with a weather-resistant finish, the wall light is rated for wet locations and perfect for outdoor spaces such as courtyard, garage, front porch, hallway, etc.
- Light fixture is compatible with an E26 incandescent bulb or dimmable LED bulb (suggest A19 or Edison bulb), please note that not dimmable LED isn't compatible
- Product dimensions: the product size is 4.75 in. W x 5.5 in. E x 13.5 in. H and the backplate is 4.75 in. W x 0.75 in. E x 4.75 in. H, 1 package includes 2 light fixtures
- All mounting hardware and instruction are included for quick and easy installation, to work properly, the light fixture should be installed and not confront any jets of air conditions or strong airflow
- [Return Policy](#)

Product Information

Internet # 321420910

Model # CA2239-2W

Additional Resources

From the Manufacturer

- [Warranty](#)
- [Instructions / Assembly](#)
- [Return Policy](#)



AVIANCE LIGHTING Aston 1...

★★★★★ (4.7 / 53)

\$101³⁴

Sponsored



Transcend Lineage 1 in. x 6 in. x 20 ft. Jasper Square Edge Composite Deck Board

by Trex ★★★★☆ (1)

[Product Details](#)

[Specifications](#)

[Questions & Answers](#)

[Customer Reviews](#)

... / [Lumber & Composites](#) / [Decking](#) / [Deck Boards](#) / [Composite Decking Boards](#)

Internet # 330530873 Model # JA010620TLS01 Store SKU # 1009484093

Trex

Transcend Lineage 1 in. x 6 in. x 20 ft. Jasper Square Edge Composite Deck Board

★★★★☆ (1) [Questions & Answers](#)



Hover Image to Zoom

[Share](#) [Print](#)

- Water-resistant, fade and stain resistant board is easy to clean
- 50 year limited residential warranty
- Made from 95% recycled materials
- [View More Details](#)

Special Order

Please visit your local Pro Desk or call our Pro Support Team to discuss pricing and availability. Call [1-844-410-5464](tel:1-844-410-5464). Delivery and availability may vary by zip code.

Product Details



Feedback



Transcend Lineage 1 in. x 6 in. x 20 ft. Jasper Square Edge Composite Deck Board

by Trex ★★★★☆

Lineage decking resists fading and staining, offering long-lasting beauty with minimal maintenance. Enjoy peace of mind with our 50-year Limited Residential Warranty, knowing your deck will remain a stunning centerpiece for years to come. Experience the pinnacle of outdoor living with Trex Transcend Lineage decking.

Highlights

- Trex composite decking is a durable, beautiful and eco-friendly alternative to traditional wood
- A deep shade of mocha, Jasper is reminiscent of old-growth forests and rocky mountainsides, with its rich umber hue and delicate streaking.
- High-performance, low-maintenance boards clean easily with soap and water and never need sanding, staining or painting
- Made of quality composite for durability; won't rot or splinter
- Backed by 50-Year Limited Residential and Fade and Stain warranties
- Use grooved-edge boards and Trex hidden fasteners for a screw-free surface or square-edge boards for traditional decking applications, edging and stairs
- Transcend Lineage is engineered to keep your deck cooler, even on the hottest days
- Made of 95% recycled materials in the USA
- [Return Policy](#)
- California residents [see Prop 65 WARNINGS](#)



Product Information

Internet # 330530873
 Model # JA010620TLS01
 Store SKU # 1009484093

Additional Resources

[Shop All Trex](#)

From the Manufacturer

- [Warranty](#)
- [Return Policy](#)

Specifications



Dimensions

Actual Product Length (ft.)	20 ft
Actual Product Thickness (in.)	0.94 in
Actual Product Width (in.)	5.5 in
Approximate Weight (lb)	52
Nominal Product Length (ft.)	20 ft
Nominal Product Thickness (in.)	1
Nominal Product Width (in.)	6 in

Details



Transcend Lineage 1 in. x 6 in. x 20 ft. Jasper Square Edge Composite Deck Board

by Trex ★★★★☆

Fastener recommendation	Trex Hideaway Hidden Fastener
Features	Water Resistant
Material	Composite
Total Linear Feet Covered	20

Warranty / Certifications

Manufacturer Warranty and

Feedback

[How can we improve our product information? Provide feedback.](#)

Questions & Answers

Customer Reviews

3 out of 5 ★★★★☆ (1)

More to Explore

Sponsored

Exclusive

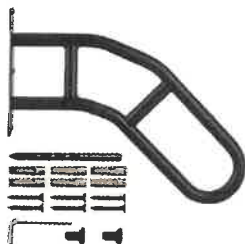


PEAK Aluminum Railing
36-5/16 in. H x 66 in. W
Aluminum Deck Railing Cle...

★★★★☆ (4.5 / 1606)

\$139⁰⁰

Add to Cart



SVOPE
Wall Mount Handrails for
Outdoor Steps, 17.72 in. H ...

★★★★☆ (4.5 / 2)

\$43¹⁹

/box
Was \$47.99
Save \$4.80 (10.00%)

Add to Cart

Exclusive



PEAK Aluminum Railing
42 in. x 40 in. Black Aluminum
Deck Railing Picket Gate

★★★★☆ (4.5 / 1655)

\$289⁰⁰

Add to Cart

Exclusive



Glass Warehouse
3.8 in. in Diameter x 6.4 in. H
Black Stainless Steel Roun...

★★★★☆

\$74⁶²

Add to Cart

Exclusive



Glass Warehouse
3.8 in. in Diameter x 6.4 in. H
Silver Stainless Steel Roun...

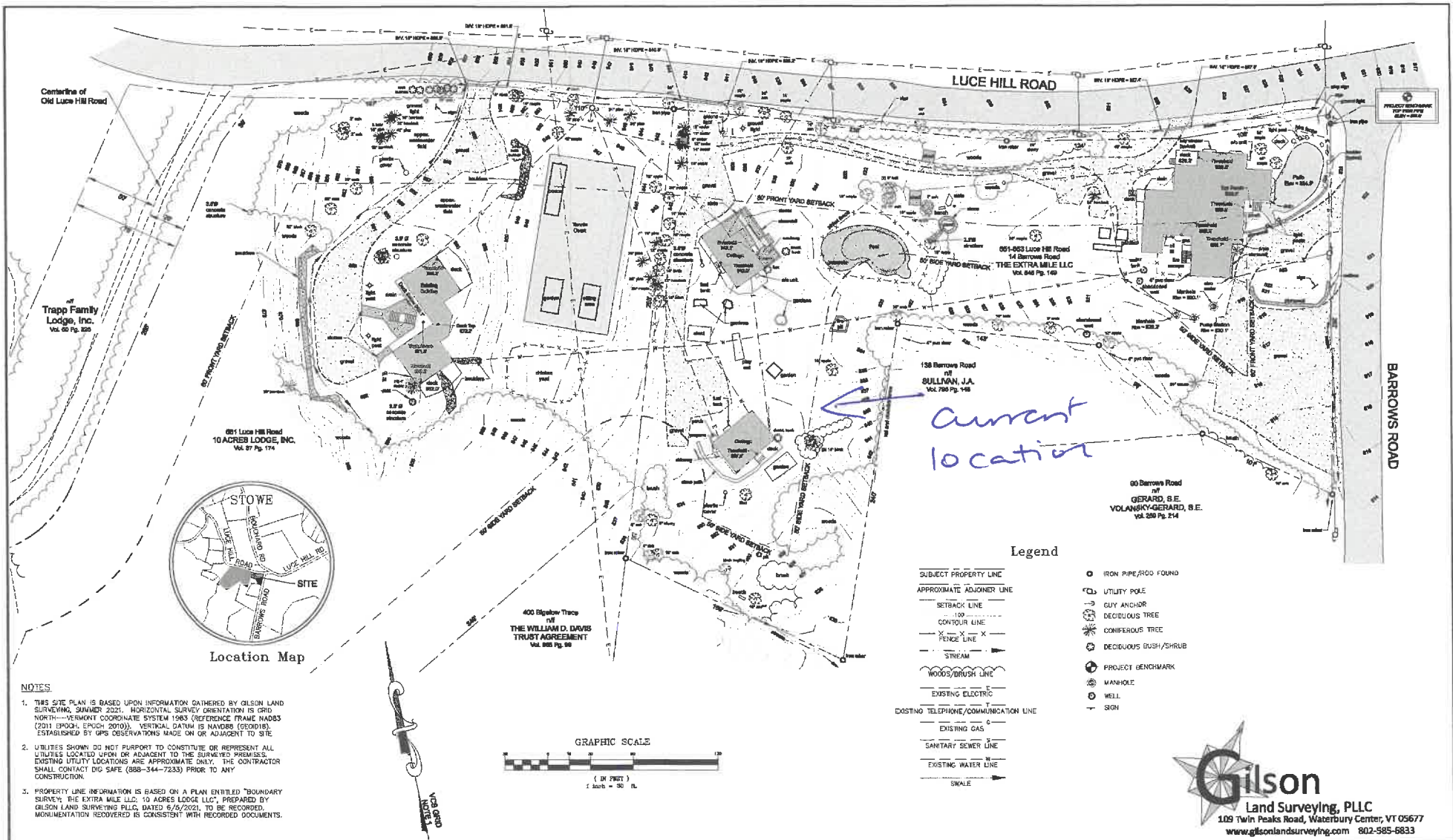
★★★★☆

\$65⁰⁵

Add to Cart

< 1/4 >

Recently Viewed



Current location

Revisions	
Date	Description
06/24/2021	Added 88-2 2021 Decid. Setback to appropriate w/Owner Signature

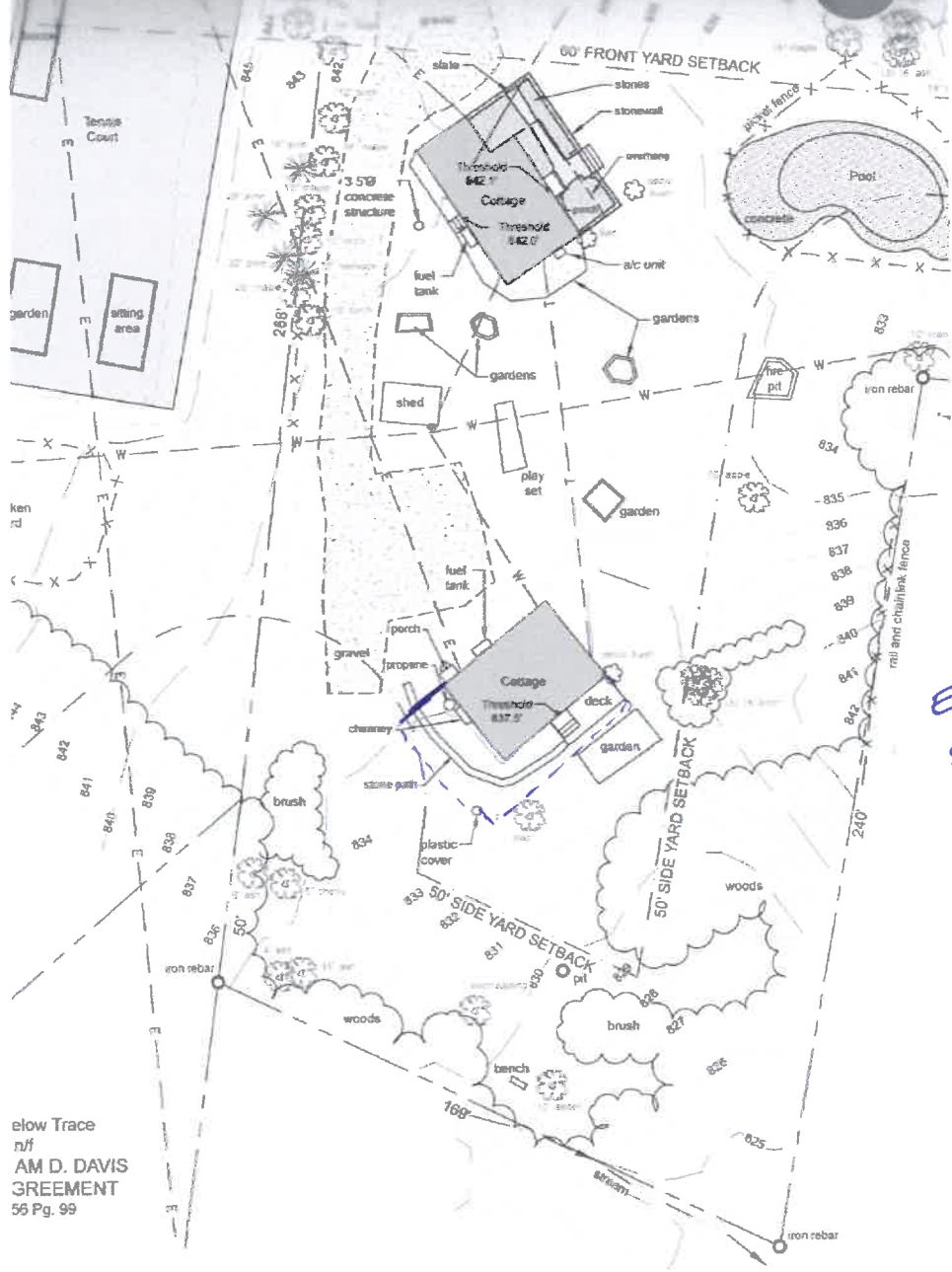
Gilson
Land Surveying, PLLC
109 Twin Peaks Road, Waterbury Center, VT 05677
www.gilsonlandsurveying.com 802-585-6833

SURVEYED: RG DATE: 06/21/2021
DRAWN: RG DATES: 06/24/2021
CHECKED: RG DATES: 11/11/2021
APPROVED: RG DATES: 11/11/2021

Existing Conditions Site Plan
Property of
THE EXTRA MILE, LLC
10 ACRES LODGE, INC.
STOWE, VT

ORIGINAL SCALE: 1" = 30' Date: 06/24/2021 DWG# 21030.1

21030 EXISTING CONDITIONS 9...

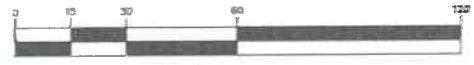


Enlarged size

elow Trace
n/f
AM D. DAVIS
GREEMENT
56 Pg. 99

EXIS'

GRAPHIC SCALE



(IN FEET)
1 inch = 30 ft.



