
[illegible]

 **CHRISTIAN C. CAREY**
ARCHITECT, P.C.

Architecture ♦ Historic Preservation

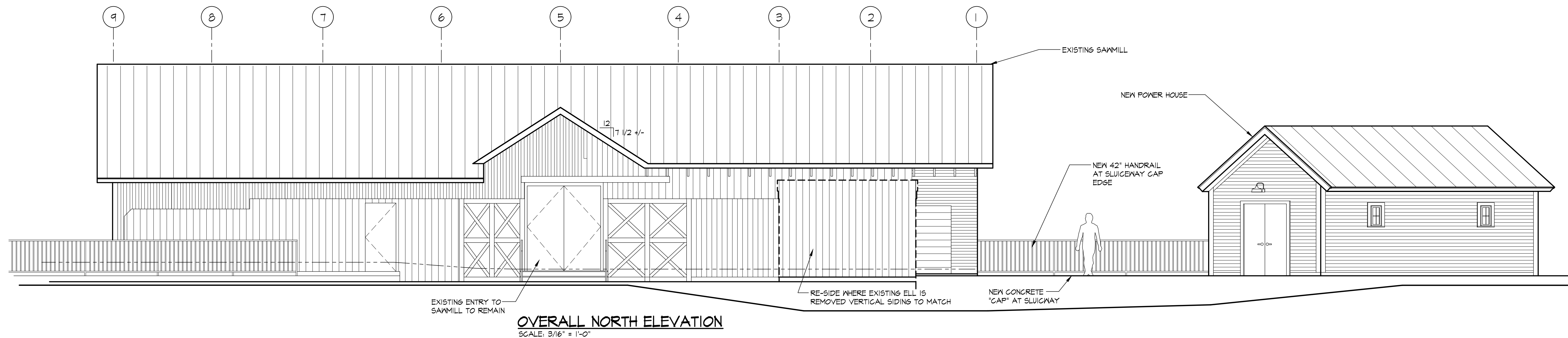
13 Sylva Park Road, Stowe, Vermont 05672 802-253-1904

STOWE ELECTRIC DEPARTMENT
POWER HOUSE
435 MOSCOW ROAD
STOWE, VERMONT

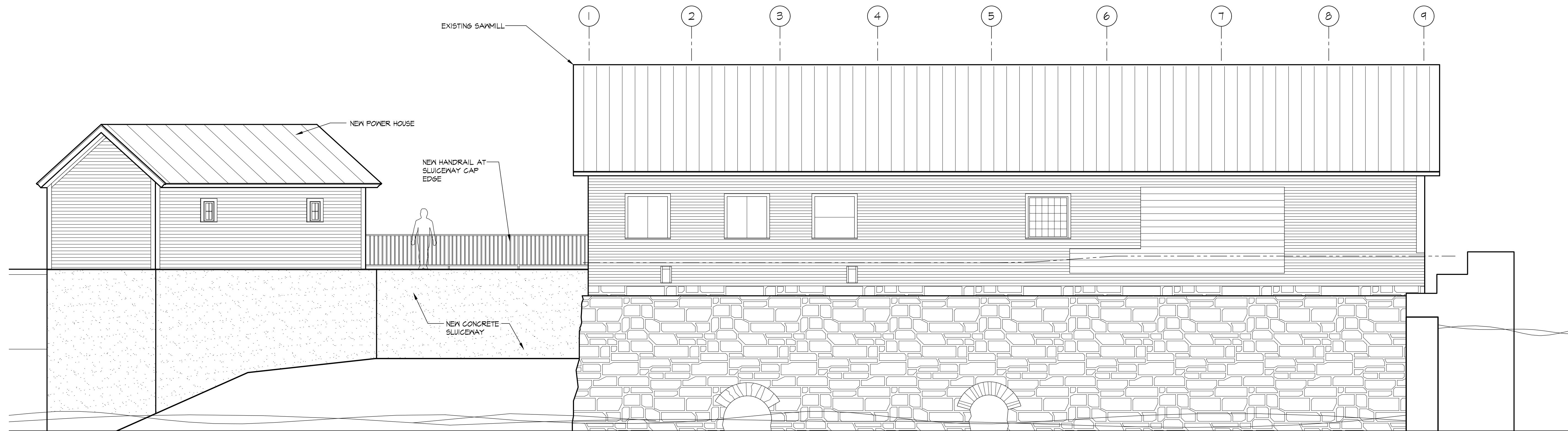
FLOOR PLAN AND ELEVATIONS

SCALE:	AS NOTED
CADD DATE:	
DRAWN BY:	CCC
CADD FILE:	

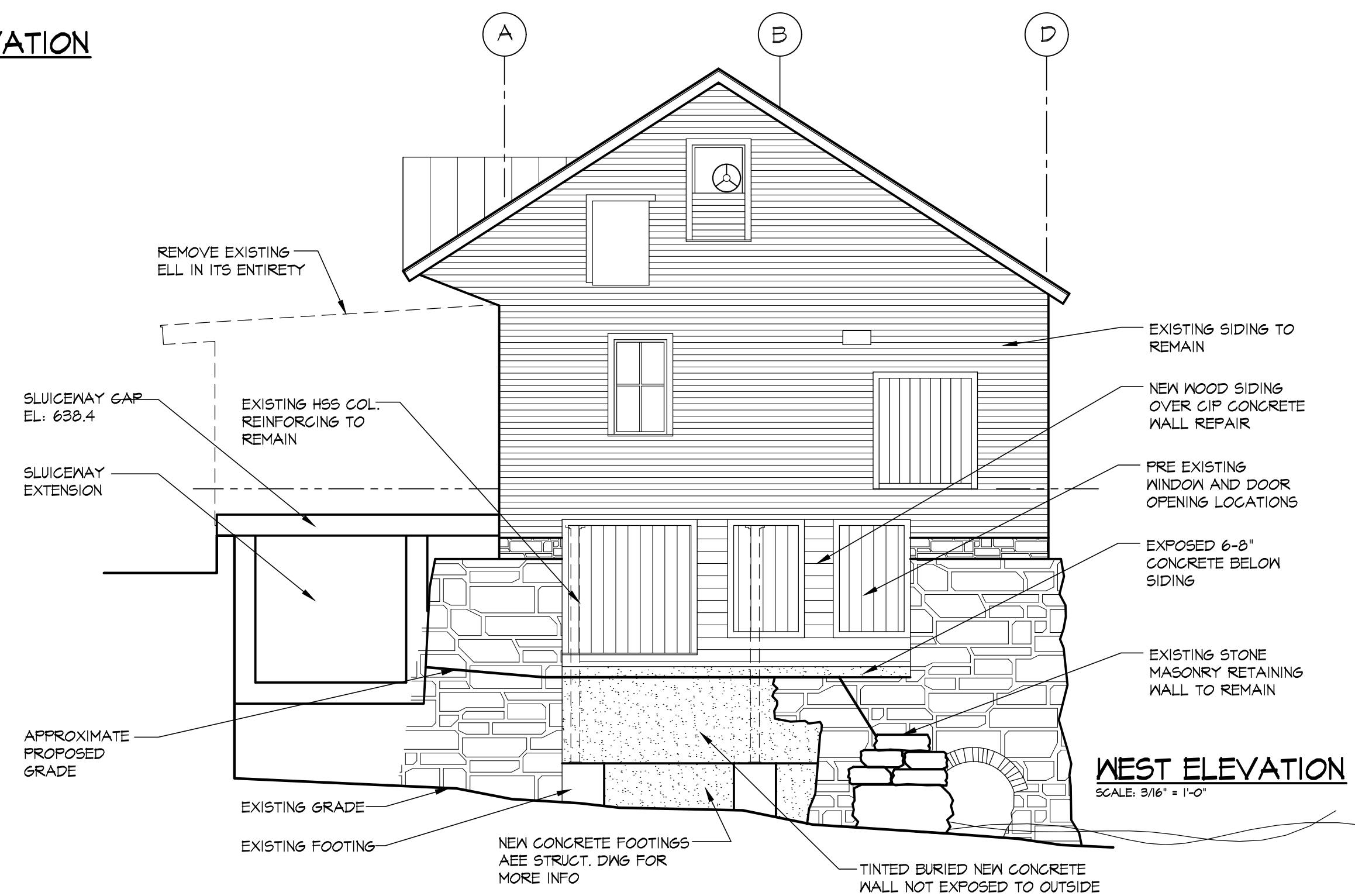
DRAWING NO.
A1.0



OVERALL NORTH ELEVATION
SCALE: 3/16" = 1'-0"



OVERALL SOUTH ELEVATION
SCALE: 3/16" = 1'-0"



WEST ELEVATION
SCALE: 3/16" = 1'-0"

NOTE:
ALL PROPOSED REPAIRS AND RESTORATION AND
EXTERIOR FINISHES ARE SUBJECT TO THE NATIONAL
HISTORIC PRESERVATION ACT - SECTION 106 REVIEW
AND APPROVAL.

NOT FOR CONSTRUCTION

CHRISTIAN C. CAREY
ARCHITECT, P.C.
Architecture • Historic Preservation
33 Sylva Park Road, Stone, Vermont 05672 802-253-4394

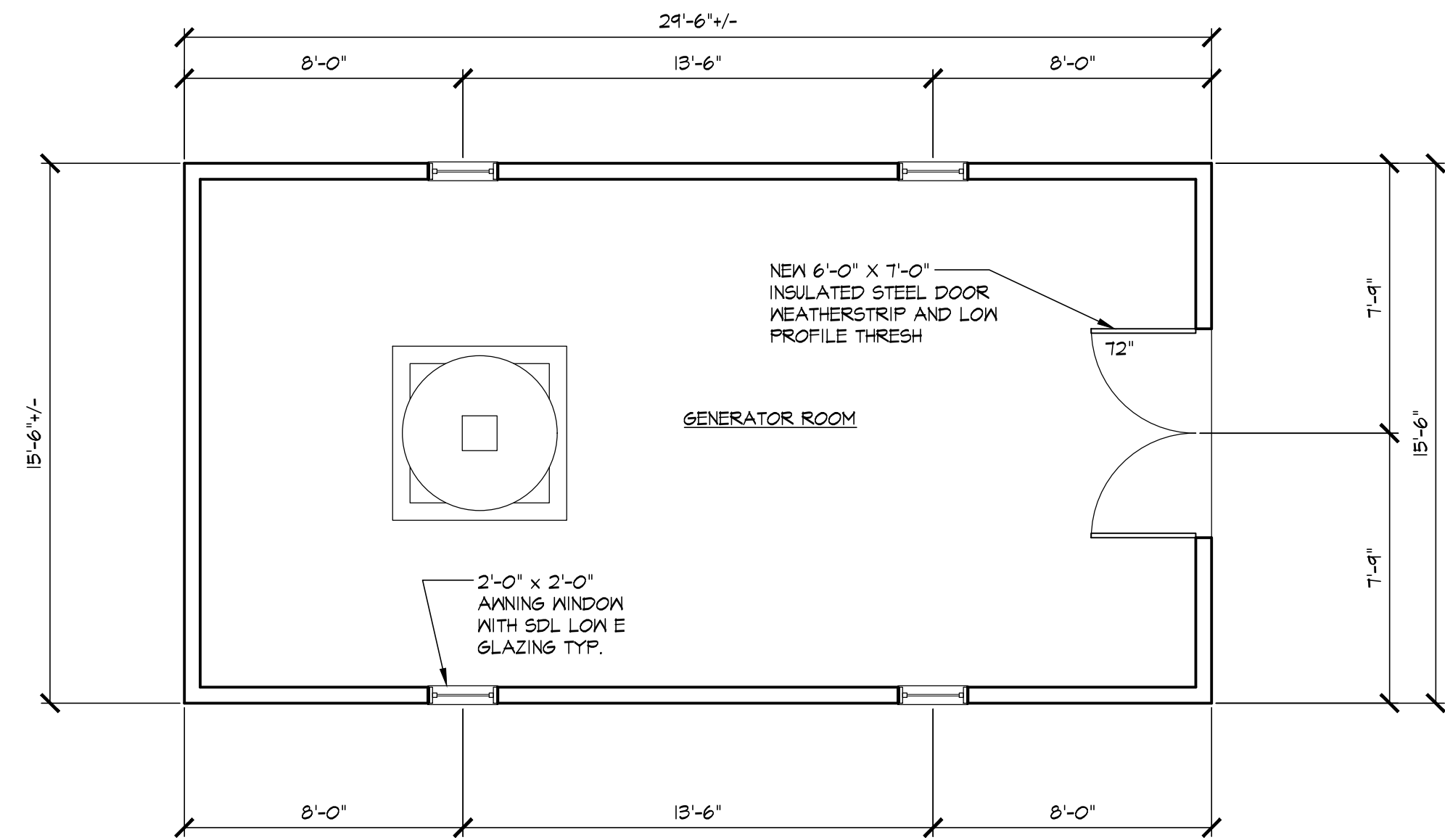
**STONE ELECTRIC DEPARTMENT
POWER HOUSE**
435 MOSCON ROAD
STONE, VERMONT

FLOOR PLAN AND ELEVATIONS

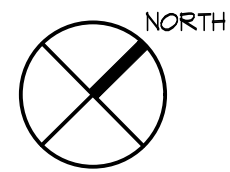
SCALE: AS NOTED
CADD DATE:
DRAWN BY: CCC
CADD FILE:

DRAWING NO.
A2.0

ACTION	DATE	BY	DESCRIPTION
C	11/14/24	CCC	SHPG RELEASE
B	10/15/24	CCC	PROGRESS RELEASE
A	8/16/24	CCC	PROGRESS RELEASE

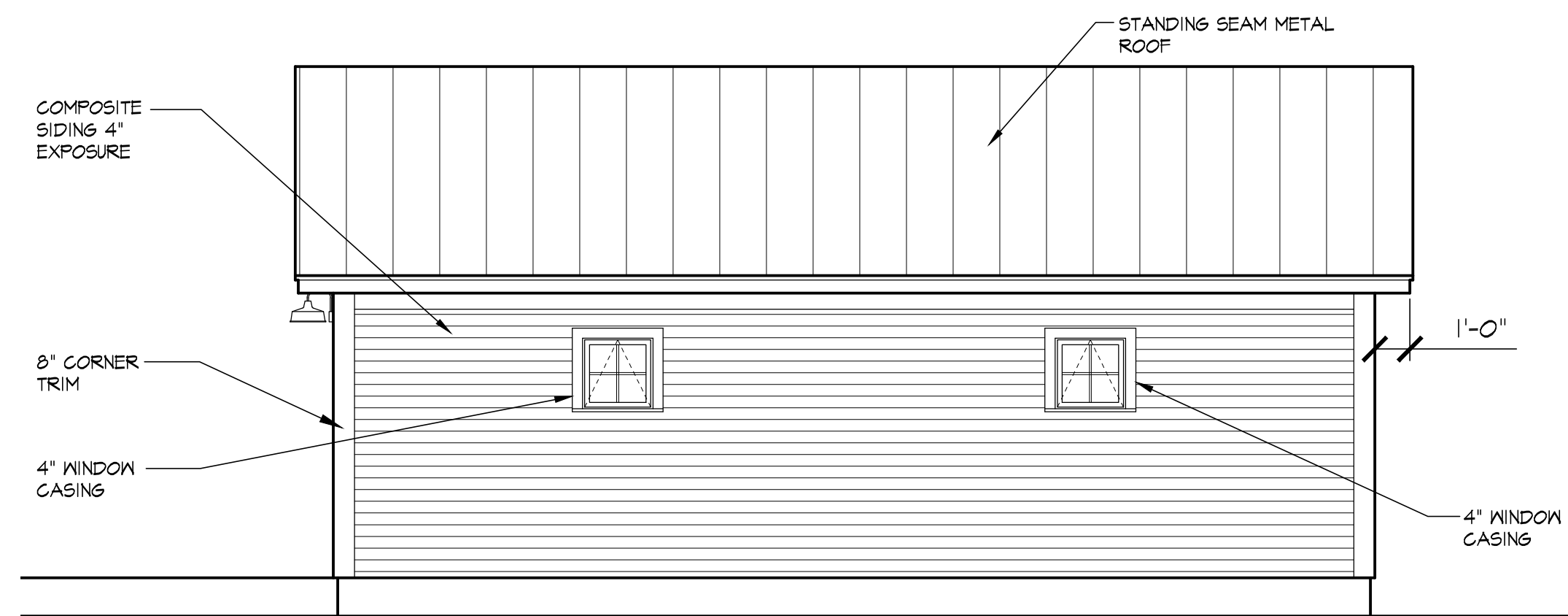


POWER HOUSE FIRST FLOOR PLAN
SCALE: 1/4" = 1'-0"
342 SF

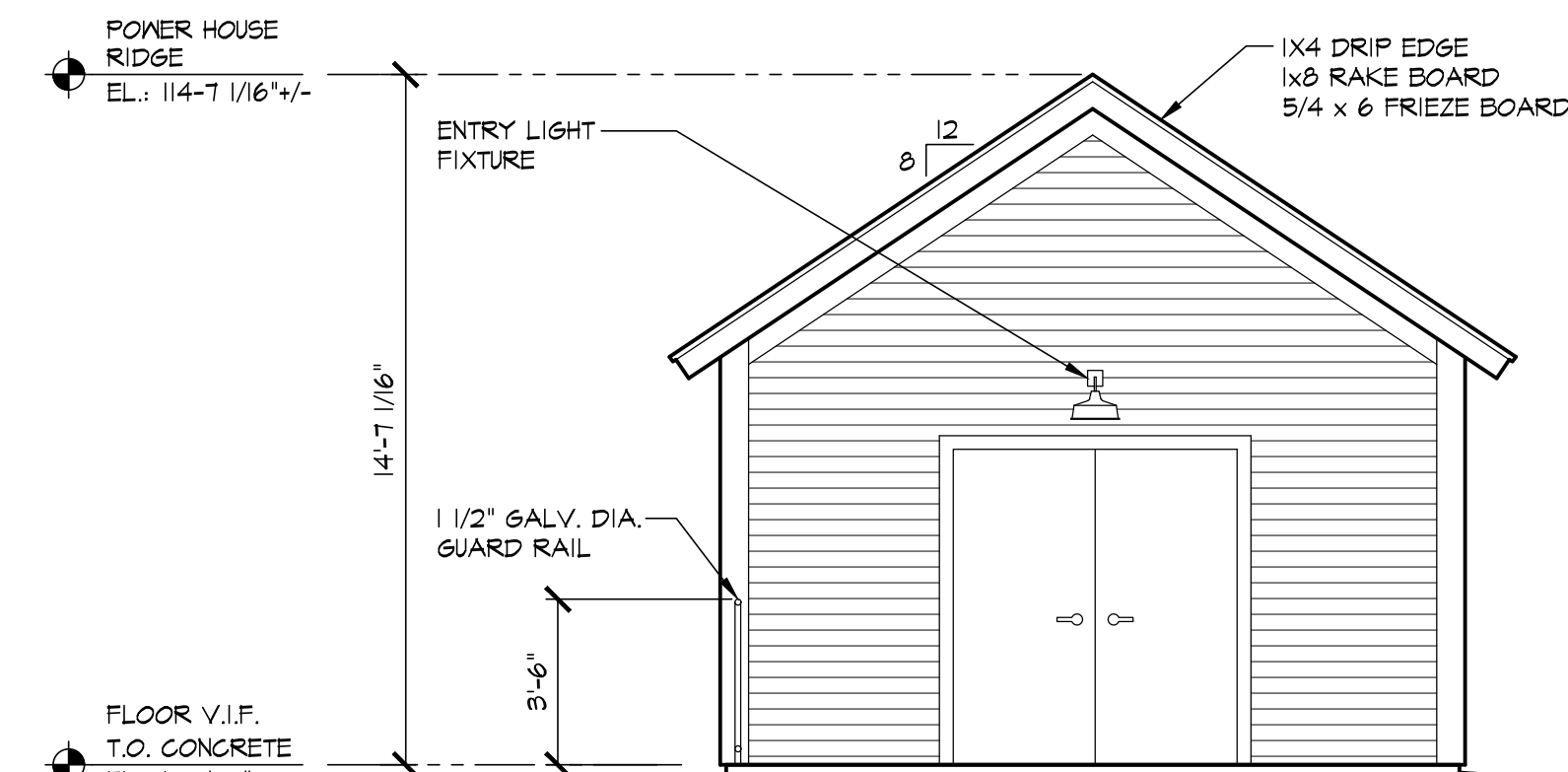


NOTE:
ALL PROPOSED REPAIRS AND RESTORATION AND
EXTERIOR FINISHES ARE SUBJECT TO THE NATIONAL
HISTORIC PRESERVATION ACT - SECTION 106 REVIEW
AND APPROVAL.

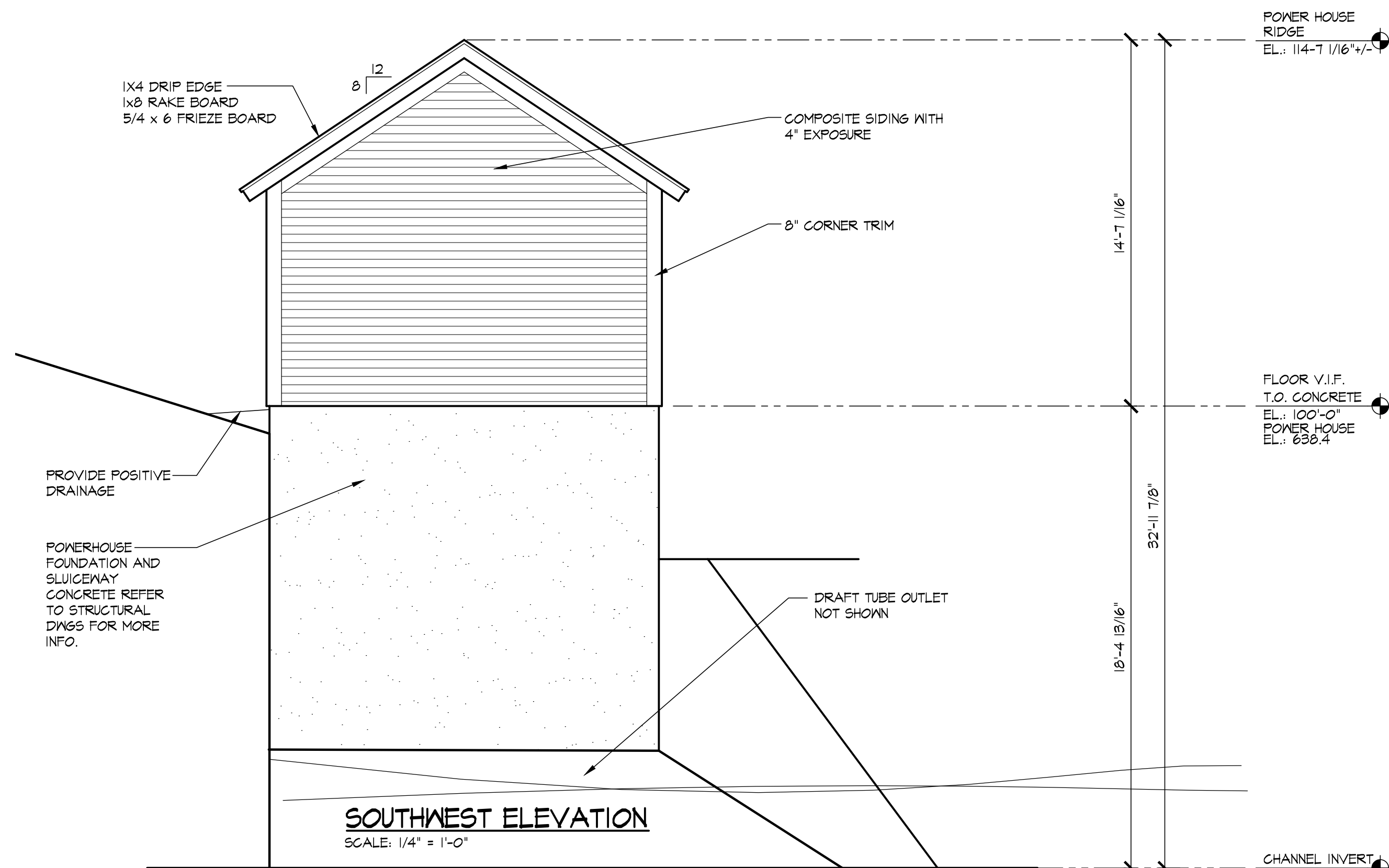
NOT FOR CONSTRUCTION



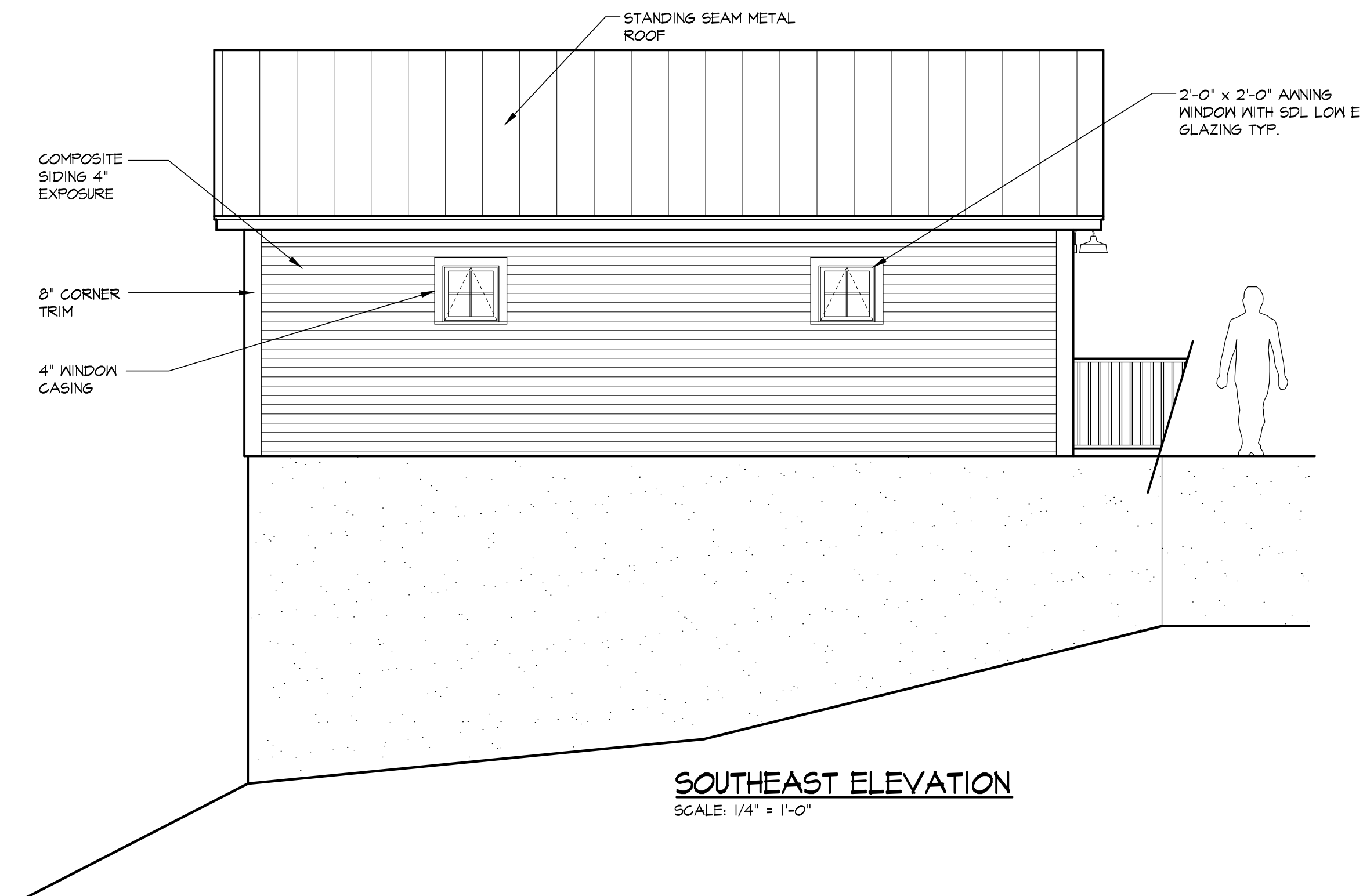
NORTHWEST ELEVATION
SCALE: 1/4" = 1'-0"



NORTHEAST ELEVATION
SCALE: 1/4" = 1'-0"



SOUTHWEST ELEVATION
SCALE: 1/4" = 1'-0"



SOUTHEAST ELEVATION
SCALE: 1/4" = 1'-0"

CHRISTIAN C. CAREY
ARCHITECT, P.C.
Architecture • Historic Preservation
33 Sylva Park Road, Stone, Vermont 05672 802-253-4384

STONE ELECTRIC DEPARTMENT
POWER HOUSE
435 MOSCON ROAD
STONE, VERMONT

FLOOR PLAN AND ELEVATIONS

SCALE: AS NOTED
CADD DATE:
DRAWN BY: CCC
CADD FILE:

DRAWING NO.
A2.1

GENERATION LIGHTING

8637401-15: Medium One Light Outdoor Wall Lantern Dimensions:



Diameter:	12"	Extends:	17 1/8"
Width:	12"	Extends Max:	23 1/8"
Height:	10 5/8"	Wire:	6 1/2" (color/Black/White)
Weight:	1.8 lbs.	Mounting Proc.:	Cap Nuts
		Connection:	Mounted To Box

Bulbs:

1 - Medium A19 75w Max. 120v - Not included

Features:



- Dark sky friendly. Designed to emit no light above the 90° horizontal plane. Photometry unavailable.
- Easily converts to LED with optional replacement lamps
- Meets Title 24 energy efficiency standards
- Title 24 compliant if used with Joint Appendix (JA8) approved light bulbs listed in the California Energy Commission Appliance database.

Collection: Barn Light

Featured in the decorative Barn Light collection

1 A19 Medium 75 watt light bulb

Dark sky friendly. Designed to emit no light above the 90° horizontal plane. Photometry unavailable.

Easily converts to LED with optional replacement lamps

Meets Title 24 energy efficiency standards

UPC #:785652092749

Finish: White (15)

Material List:

1 Body - Aluminum - White

Safety Listing:

Safety Listed for Wet Locations

Instruction Sheets:

Trilingual (English, Spanish, and French) (990W8_37401-BRL)

Backplate / Canopy Details:

Type	Height / Length	Width	Depth	Diameter	Outlet Box Up	Outlet Box Down
Back Plate			1 1/4	5	5 1/4	8 1/4

Shipping Information:

Package Type	Product #	Quantity	UPC	Length	Width	Height	Cube	Weight	Fr. Class	UPS Ship
Individual	8737401-12	1	785652092749	20.5	16.5	16.38		1	60	Yes
NJ Pallet		38		48	40	77	85.556	136.8		No
NV Pallet		38		48	40	77	85.556	136.8		No



16002

TWO-LAMP OUTDOOR ADJUSTABLE FLOODLIGHT

FINISHES

MW - Matte White
PBK - Powder Coated Black
PBZ - Powder Coated Bronze

DIMENSIONS

Width 4.72"
Height 9.12"
Depth 6.15"
Backplate Width 4.72"
Backplate Extension 1.34"
Weight 0.946 lbs.

MATERIAL Aluminum

GLASS

Glass No

LAMPING

Bulbs 2 - PAR38
Bulbs Base Medium (E26)
Watts per Bulb 150W
Voltage 120V
Total Wattage 300W
Bulbs Included No

CERTIFICATION

UL/ETL Wet Location

ITEM NUMBER

SKU's 16002 MW
16002 PBK
16002 PBZ



16002 PBK



16002 MW



16002 PBZ

- Twin adjustable heads.
- Connects easily to the junction box.
- Weather-resistant aluminum housing.
- Easy installation.
- Adjustable lamp heads for directional lighting.

Millennium Lighting
105 Declaration Drive
McDonough, GA 30253
www.millenniumlighting.com



Gretchen 121 1/2" High Black Outdoor Post Pole

[Z-Lite Outdoor Post Black Collection](#)

\$1,870.00

As low as \$100.69/mo with **PayPal**. [Learn more](#)

Free Shipping* | [Price Matching Policy](#)

In Stock - [Ships in 1 to 2 Days](#)

1

ADD TO CART

♡ SAVE

CHAT

Thicker and heavier than standard posts, this ultra-practical modern metal outdoor post pole in a black finish can withstand more rigorous weather conditions.

Product Details

- 121 1/2" high x 16 3/4" wide. Weighs 32 lbs.
- Modern metal outdoor post pole for post light.
- Black finish over aluminum construction.
- Come complete with mounting template, bolts, and cap nuts.
- Thicker and heavier than standard posts, can withstand more rigorous weather conditions.

This modern metal outdoor post pole in a black finish is thicker and heavier than standard posts. With this feature, the pole can withstand more rigorous weather conditions, making it an essential outdoor design tool. All posts come complete with mounting template, bolts, and cap nuts.

Product Attributes

Style	Contemporary
Finish	Black
Type	Accessories
Color	Black

Technical Specifications

Height	121.50 inches
Weight	32.00 pounds
UPC Code	685659011531



Pella® Lifestyle Series

Clad/Wood



#1 performing wood window and patio door for the combination of energy, sound and value.¹

Triple-pane casement



Dual-pane double-hung window with Hidden Screen



- **Easy-to-learn Pella Steady Set™ interior installation system**

Pella Steady Set Interior Installation System is a revolutionary, award-winning and safer way to install new construction windows.¹ The simple system is the fastest, most labor efficient wood window installation system with uncompromising quality.² Available on select windows.

- **Performance redefined**

You don't have to compromise on any aspect of performance. Available performance solutions offer an unbeatable combination of energy efficiency, sound control and value.³

- **ENERGY STAR® certified⁴**

Pella products offer energy-efficient options that will meet or exceed ENERGY STAR guidelines in all 50 states. Pella Lifestyle Series products with triple-pane glass have been awarded ENERGY STAR Most Efficient Mark in 2023.

- **Enhanced sound control**

Our patented, triple-pane design with Advanced Low-E glass allows for mixed glass thickness for enhanced sound dampening resulting in an average 52% noise reduction versus single-pane windows.⁵

- **Intentional design for improved durability**

Intentional jamb on sill design helps seal the end grain of the wood and elevates it off the rough opening, reducing the potential for moisture.

- **Durable 3-way corner joints**

Three-way corner joints are made up of mortise-and-tenon, metal fasteners and commercial adhesive for added strength and durability.

- **Low-maintenance exteriors**

Aluminum-clad exteriors with EnduraClad® finish resists fading and chalking. It is applied in an overlapping fashion for exceptional protection.

- **Exclusive wood protection**

Pella's exclusive EnduraGuard® wood protection is applied after the pieces have been cut and milled, but prior to final assembly. It provides advanced protection against the effects of moisture, decay, stains from mold and mildew — as well as termite damage.

- **Time-tested innovations**

Create unique room-by-room solutions and achieve project goals with performance options and purposeful innovations like the Hidden Screen and integrated blinds, shades and security sensors. For more information on integrated wireless security sensors, go to connectpella.com.

- **Best limited lifetime warranty⁶**

Pella Lifestyle Series products are covered by the best limited lifetime warranty in the industry for wood windows and patio doors.⁶

- **Testing beyond requirements**

At Pella, our products are tested beyond requirements to help ensure they have long-lasting performance and reduce call-backs for you.

- **Hidden Screen**

The revolutionary Hidden Screen appears when you open a double-hung window and folds away when it is closed. It provides a clear view when the window is closed and improves curb appeal year-round.

Available in these window and patio door styles:⁷



Special shape windows also available.

^{1,2,3,4,5,6,7} See back cover for disclosures.

Product Specifications


Window & Patio Door Styles	Min. Width	Min. Height	Max. Width	Max. Height	Performance Class & Grade	Performance Values			Frame/Install
						U-Factor	SHGC	STC	
Awning Dual-pane vent	21"	17"	59"	59"	LC30 – LC50	0.25 - 0.34	0.19 - 0.51	25-28	Pella Steady Set- Fold-out Fin, Block Frame, EnduraClad Exterior Trim / Brickmould
Awning Triple-pane vent	21"	17"	59"	59"	R20 - CW50	0.20 - 0.28	0.15 - 0.41	31-37	
Casement Dual-pane vent	17"	17"	35"	73"	LC30-LC50	0.25 - 0.34	0.19 - 0.58	25-31	
Casement Triple-pane vent	17"	17"	35"	73"	R20-CW50	0.20-0.25	0.17-0.46	31-37	
Fixed Casement Dual-pane	17"	17"	73"	73"	LC30-LC50	0.23 - 0.35	0.20 - 0.57	29-32	
Fixed Casement Triple-pane	17"	17"	73"	73"	R20-CW50	0.19 – 0.27	0.15 – 0.49	33-37	
Double-Hung Dual-pane vent	21"	35"	48"	84"	LC30-LC50	0.25 - 0.34	0.20 – 0.48	27-31	Fold-out Fin, Block Frame, EnduraClad Exterior Trim / Brickmould
Hinged Patio Door Dual-pane single door	30"	80"	38"	96"	LC50	0.26 – 0.32	0.18 – 0.48	31	
Hinged Patio Door Triple-pane single door	30"	80"	38"	96"	LC55	0.23 – 0.28	0.12 – 0.34	34-36	
Hinged Patio Door Dual-pane double door	60"	80"	75"	96"	LC50	0.25-0.29	0.18-0.48	30-32	
Hinged Patio Door Triple-pane double door	50"	80"	75"	96"	LC55	0.22-0.26	0.14-0.38	34-36	
Sliding Patio Door Dual-pane single-door fixed (O)	31"	80"	49"	96"	CW50	0.24-0.33	0.18-0.51	27	
Sliding Patio Door Triple-pane single-door fixed (O)	31"	80"	49"	96"	CW60	0.21-0.27	0.17-0.45	33-36	
Sliding Patio Door Dual-pane double-door vent (OX or XO)	60"	80"	96"	96"	R20-LC50	0.24 – 0.34	0.18-0.51	29-32	
Sliding Patio Door Triple-pane double-door vent (OX or XO)	60"	80"	96"	96"	R25-LC60	0.22 – 0.29	0.16 - .44	33-36	

Window sizes available in 1/4" increments
Special sizes available in triple-pane patio doors. For more information regarding performance, visit pella.com/performance. For more information regarding frame and installation types, visit installpella.com.


Window Hardware

Essential Collection

Select from popular designs and finishes to suit every style.




Fold-away Crank




Cam-Action Lock


Finishes:



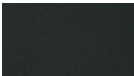
Champagne



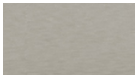
White




Brown



Matte Black



Satin Nickel




Satin Brass


Patio Door Hardware

Essential Collection

Elevate your style and transform a home with elegant selections.




Hinged Patio Door Handle




Sliding Patio Door Handle


Finishes:




Champagne



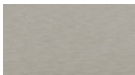
White




Brown



Matte Black



Satin Nickel

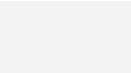


Satin Brass

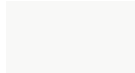
Colors

Prefinished Pine Interior Colors

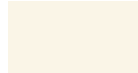
We can prefinish pine in your choice of several paint and stain colors. Unfinished or primed and ready-to-paint are also available.




White




Bright White



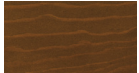
Linen White




Golden Oak Stain



Early American Stain



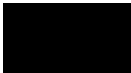
Provincial Stain



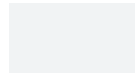
Black Stain

Aluminum-Clad Exterior Colors


Our low-maintenance EnduraClad® exterior finish resists fading and helps protect windows and patio doors for years. Seacoast EnduraClad protective finish for coastal projects with high salt exposure is also available.




Black




White




Brown




Fossil




Iron Ore



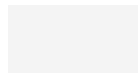
Portobello




Putty




Almond




Classic White



Brick Red




Hartford Green




Wolf Gray

Integrated Blinds & Shades


Raise blinds up for an unobstructed view or tilt to let in just the right amount of light. Our best integrated and accessible blinds are available manual or motorized with Pella® Insynctive® technology.




White




Poplar White




Bisque



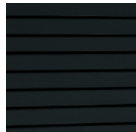
Storm



Golden



Mocha




Black


Integrated Shades⁸

Our best integrated fabric shades feature a white exterior fabric for a uniform look from the street. Integrated and accessible shades are available manual or motorized with Pella Insynctive technology.


Light-Filtering:



White




Silver




Maize

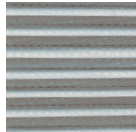
Room-Darkening:



Cotton



Bamboo



Ash

Haven't landed on the final blind or shade color selection? No problem. With our patented triple-pane design, you and your customer can make those decisions later in the schedule. Our triple-pane products come with all of the hardware to add a blind or shade straight from the factory or at a later time in the building or remodeling process.

Screens⁹

Hidden Screen

The Hidden Screen appears when you open a double-hung window and folds away when the window is closed. It allows 44% more natural light into your home when a window is closed than a standard screen.¹⁰ Hidden Screen cartridge available in Black, White, Brown, Fossil and Iron Ore colors to match or complement the exterior cladding color choice.

Rolscreen®

Rolscreen soft-closing retractable screens roll out of sight when not in use. Available on casement and awning windows and sliding patio doors.

InView™

InView flat screens let in 14% more light and are 8% more open for improved airflow when compared to the conventional fiberglass screen.¹¹

^{8,9,10,11} See back cover for disclosures.

Performance Packages

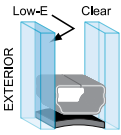
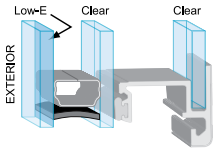
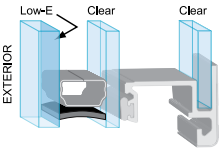
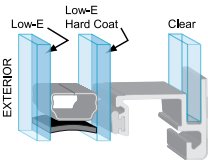
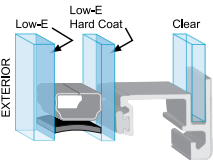
To make things easier, we've created performance packages.

Performance solutions offer an unbeatable combination of energy efficiency, sound control and value.¹ Create room-by-room solutions with the upgraded triple-pane glass design.

All values below are averages compared with single-pane windows.



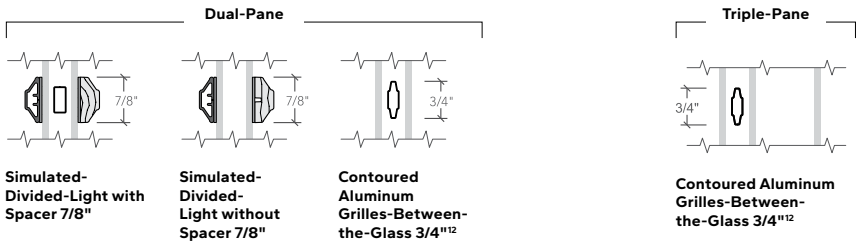
Pella® Lifestyle Series offers products awarded ENERGY STAR® Most Efficient for 2023.⁴

Base	Performance 71% More Energy Efficient ¹⁰ + 34% Noise Reduction ⁵	Sound Control 52% Noise Reduction ⁵	Energy Efficiency 83% More Energy Efficient ¹⁰	Ultimate Performance 79% More Energy Efficient ¹⁰ + 52% Noise Reduction ⁵
 Advanced Low-E Two panes of insulating, energy-efficient glass and our most popular features and options.	 Advanced Low-E SunDefense Low-E or NaturalSun Low-E A triple-pane glass design for a combination of both improved energy efficiency and sound performance.	 Advanced Low-E, SunDefense Low-E or NaturalSun Low-E Sound-reduction glazing Triple-pane glass design featuring mixed glass thicknesses for enhanced sound dampening.	 AdvancedComfort A triple-pane glass design with upgraded AdvancedComfort Low-E glass for enhanced energy efficiency.	 AdvancedComfort Sound-reduction glazing A triple-pane glass design featuring mixed glass thicknesses with upgraded AdvancedComfort Low-E glass for enhanced energy efficiency.

Patented triple-pane glass design gives flexibility to add integrated blinds or shades without impacting performance.

Grilles

Choose the look of true divided light or make cleaning easier by selecting grilles-between-the-glass.



The Best Limited Lifetime Warranty in the Industry

We know your reputation matters and you stake your reputation on quality, dependable products. That's why we have the best limited lifetime warranty in the industry for wood windows and patio doors.⁶

¹ Compared to leading national wood window brands recommended installation methods for new construction windows.

² Comparing average install time and plumb/level/square measurements of leading national wood window brands when installed following the manufacturer's standard installation methods for new construction windows.

³ Performance solutions require upgrades to triple-pane, AdvancedComfort Low-E and mixed glass thickness. Based on comparing product quotes and published STC/OITC and U-Factor ratings of leading national wood window and patio door brands.

⁴ Some Pella products may not meet ENERGY STAR certification in Canada. For more information, contact your local Pella sales representative or go to nrcan.gc.ca/energy/products/categories/fenestration/13739.

⁵ Reduction in sound based on OITC ratings of Pella Lifestyle Series windows with respective performance package compared to a single-pane wood or vinyl window with an OITC of 19. Calculated by using the sound transmission loss values in the 80 to 4000 Hz range as measured in accordance with ASTM E-90(09). Actual results may vary.

⁶ Based on comparing written limited warranties of leading national wood window and wood patio door brands. See written limited warranty for details, including exceptions and limitations, at pella.com/warranty.

⁷ Double-hung windows available in dual-pane only.

⁸ Available with triple-pane products only.

⁹ Requires the Insynctive App on a smart device, an Insynctive Bridge and a wireless home router with internet connection.

¹⁰ Window energy efficiency calculated in a computer simulation using RESFEN 6.0 default parameters for a 2000 sq. foot new construction single-story home when Pella Lifestyle Series windows with the respective performance package are compared to a single-pane wood or vinyl window. The energy efficiency and actual savings will vary by location. The average window energy efficiency is based on a national average of 94 modeled cities across the country and weighting based on population. For more details see pella.com/methodology.

¹¹ Improved airflow is based on calculated screen cloth openness. Screen cloth transmittance was measured using an integrated sphere spectrophotometer.

¹² Appearance of exterior grille color may vary depending on the Low-E insulating glass selection.



Hinkley Forge 22" High Black LED Outdoor Post Top-Pier Mount Light

\$279.00

As low as \$26.64/mo with **PayPal**. [Learn more](#)

[Free Shipping & Free Returns*](#) | [Price Matching Policy](#)
[Ships in 4 to 6 Weeks](#)

1

ADD TO CART

SAVE

Traditional barn-inspired gooseneck styling offers rich character to an industrial metal outdoor post top/pier mount light.

Product Details

- 22" high x 16" wide x 21 1/4" deep. Weighs 4 lbs.
- Uses one maximum 14 watt E26 standard-medium base LED bulb (not included). Comparable to a 100 watt incandescent.
- Traditional industrial metal outdoor post top/pier mount light from the Forge collection by Hinkley.
- Black finish over composite construction.
- Fits on a 3" diameter pole (not included). May also be pier mounted with an adapter which is sold separately.
- Voltage 120V.
- Dark Sky compliant. California Prop 65 Warning.

Inspired by a lighting industry staple barn light, this traditional industrial outdoor LED post top/pier mount light features a practical outdoor lighting solution to withstand the elements. Whether it is enduring harsh sunrays, extreme cold or continuous salt air, Forge by Hinkley is built to last with an industrial chic flair. Its black finish is cool and crisp, with a classic silhouette that includes a shepherd's hook detail for a rich, refined look.



[Shop all Hinkley](#)

Product Attributes

Style	Industrial
Finish	Black

Technical Specifications

Height	22.00 inches
Weight	4.00 pounds

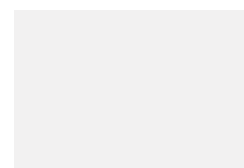


COLORFUL SIDING. BEAUTIFUL FINISH.

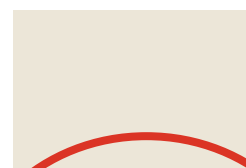
LP® SMARTSIDE® EXPERTFINISH® TRIM & SIDING

The advanced durability you expect from LP® SmartSide® Trim & Siding comes in ExpertFinish® colors. Your homeowners will love choosing colors to match their style—and you'll love the fast and easy installation that comes with LP SmartSide ExpertFinish Trim and Siding.

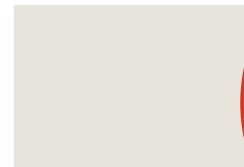
- ExpertFinish Lap Joint Siding to avoid the need for most seam caulking, joint molds, or pan flashing
- Now available in brushed smooth and cedar texture
- Advanced Durability for Longer Lasting Beauty®
- Available in 16 versatile colors that will complement most any home's style
- Industry-leading 5/15/50 year prorated limited warranty: 5-year labor and materials, 15-year finish, and 50-year substrate
- Comes in a variety of SKUs and finishes



Snowscape White



Sand Dunes



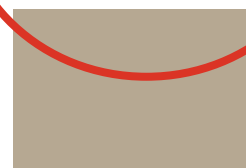
Desert Stone



Quarry Gray



Prairie Clay



Terra Brown



Harvest Honey



Timberland Suede



Garden Sage



Redwood Red



Tundra Gray



Summit Blue



Rapids Blue



Cavern Steel



Midnight Shadow



Abyss Black

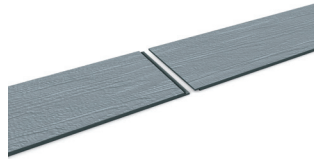


For complete product & warranty details, visit LPCorp.com/ExpertFinish

Products Available in LP SmartSide ExpertFinish Colors

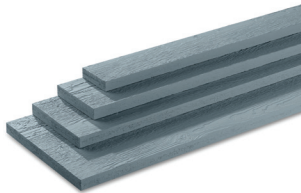
Lap Joint Siding

- 38 Series 6" x 16' – 5.84 in. (148 mm) x 192 in. (4.9 m)
- 38 Series 8" x 16' – 7.84 in. (199 mm) x 192 in. (4.9 m)



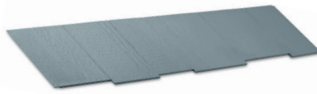
Trim

- 540 Series 5" x 16' – 194 in. (4.9 m) x 192 in. (4.9 m)
*Quebec only **
- 440/540 Series 4" x 16' – 3.50 in. (89 mm) x 192 in. (4.9 m)
- 440/540 Series 6" x 16' – 5.50 in. (140 mm) x 192 in. (4.9 m)
- 440/540 Series 8" x 16' – 7.21 in. (183 mm) x 192 in. (4.9 m)
- 440/540 Series 10" x 16' – 9.21 in. (234 mm) x 192 in. (4.9 m)
- 440/540 Series 12" x 16' – 11.21 in. (285 mm) x 192 in. (4.9 m)
- 190 Series 3" x 16' – 2.5 in. (64 mm) x 192 in. (4.9 m)



Shakes

- 38 Series 12" x 48" – 11.624 in. (295 mm) x 48.63 in. (1.2 m) *
- Reversible staggered or straight edge



Panel

- 38 Series 4' x 8' – 48.56 in. (1234 mm) x 96 in. (2.4 m)
- 38 Series 4' x 10' – 48.56 in. (1234 mm) x 120 in. (3 m) *



We're not just building for the future, we're promoting forest regeneration and preserving wildlife habitats for the benefit of all generations to come.

All photos are for illustrative purposes only. Please refer regularly to LPCorp.com for correct and up-to-date product installation instructions.

WARNING: Drilling, sawing, sanding or machining wood products can expose you to wood dust, a substance known to the State of California to cause cancer. Avoid inhaling wood dust or use a dust mask or other safeguards for personal protection. For more information go to www.P65Warnings.ca.gov/wood.



Nickel Gap

- Nickel Gap 8" x 16' – 7 in. (177 mm) x 192 in. (4.9 m)



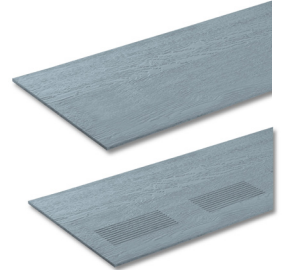
Vertical Siding

- 38 Series 16" x 16' – 15.94 in. (405 mm) x 192 in. (4.9 m)



Soffit

- 38 Series 12" Closed/Vented Soffit – 11.94 in. (303 mm) x 192 in. (4.9 m)
- 38 Series 16" Closed/Vented Soffit – 15.93 in. (405 mm) x 192 in. (4.9 m)
- 38 Series 24" Closed/Vented Soffit – 23.94 in. (608 mm) x 192 in. (4.9 m)
- Vented Soffit Only Available in Cedar



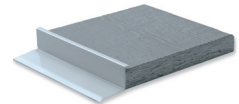
Outside Corners

- 540 Series 4" x 10' – 3.625 in. (89 mm) x 120 in. (3.0 m) *
- 540 Series 6" x 10' – 5.625 in. (140 mm) x 120 in. (3.0 m) *



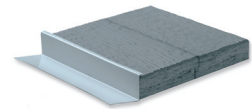
J-Blocks

- 540 Series 7.25" x 7.25" – 7.21 in. (183 mm) x 7.21 in. (183 mm)



Mini Splits

- 540 Series 7.25" x 6.75" – 7.21 in. (183 mm) x 6.75 in. (171 mm)



* Only Available in Cedar Texture
Not all products available in all colors



For complete product & warranty details, visit LPCorp.com/ExpertFinish